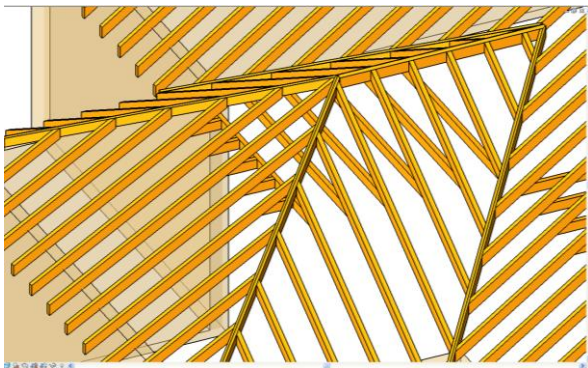


## Rafter+

**Rafter+ application for Revit® Architecture and Revit® Structure provides a set of intuitive tools for roof wood framing. It allows easy to complete the framing of any roof shape.**

Supports metric and imperial unit systems  
Available in different languages

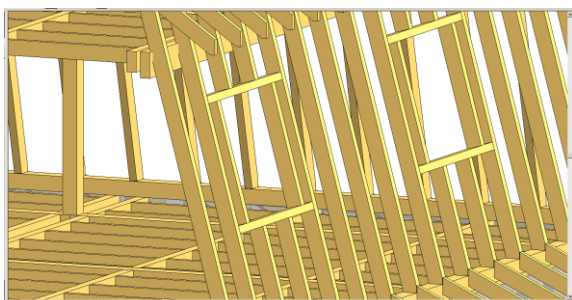
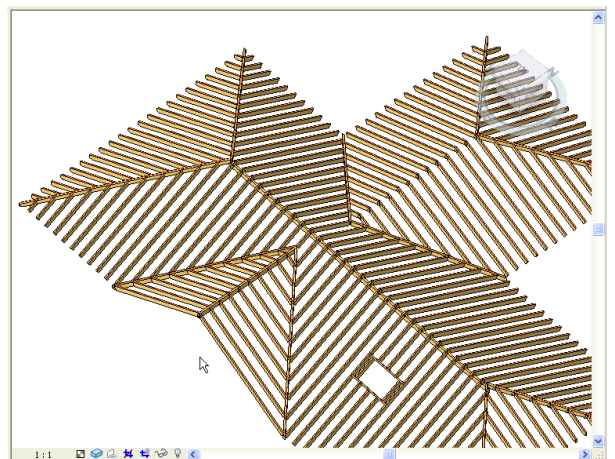
Rafter+ application provides the set of tools for roof wood framing and elements scheduling. Work is based on the final 3D roof model. Common rafter systems (incl. jack rafters) for the selected roof are automatically generated on all slopes.



All you need for creating hip/valley rafter – just do selection of two beam systems from the neighbour slopes (or select all). Rafter+ detects whether the element is a hip or a valley rafter.

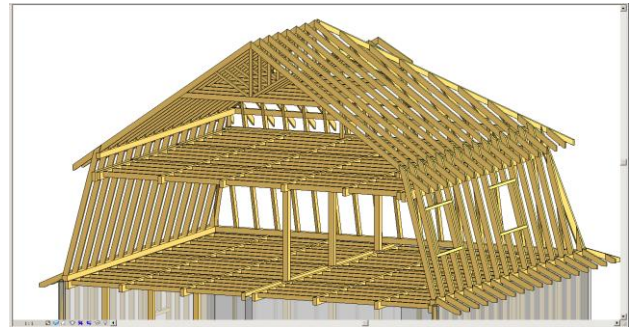
Software automatically generates a collar beam system between two selected rafters in opposite roof slopes. Vertical distance from a ridge or a level to the collar beam system can be predefined and edited later. Collar beams can be created on each side of a rafter pair.

Ridge and girder beams can be modeled easily with control of notch in (BIRD'S-MOUTH) parameters of common, jack, hip and valley rafters. Vertical or horizontal distance to the girder beam can be redefined. Existing rafters can be cut either immediately or later with a special update function. An update helps to edit and change parameters of modeled rafter or beam systems.



Openings in roof rafter systems are detected and can be framed automatically.

The application includes several functions to insert sleepers and trimmers, create horizontal beam systems, generate floor beam systems automatically, detect and frame openings in floor slabs, cut wood beams in consideration with opening geometry.



By using the Create Batten Systems function it is possible to create additional sloped or horizontal framing on a top of rafters or floor beam systems. This function is very useful in different cases.

It is possible to create horizontal beam systems.

The Rafter+ tools make it easy to place dormers. It is really simple: just choose the frame position on your roof, select configuration and click to place. The program will create all structural elements so the framing cutout will be accurate.

You will also find framing tools helping you to extend or trim beams, split or recreate beam systems and so on – great for custom framing needs. All needed families are included with software installation.



Framing Member	Framing Member Type	Framing Member s	Framing Member s	Far Cor/Mem	Col Length	Count	Volume
Beam	Beam	50.00	150.00	LBS	550.00	6	0.62 m³
Beam	Beam	50.00	150.00	TB1	900.00	14	0.63 m³
Beam	Beam	50.00	150.00	TB2	1750.00	14	0.66 m³
Beam 14							0.10 m³
Collar Beam	Collar Beam	50.00	150.00	CB1	5019.76	8	0.32 m³
Collar Beam 8							0.32 m³
Common Rafter	Rafter	50.00	150.00	CR1	3268.53	11	0.62 m³
Common Rafter	Rafter	50.00	150.00	CR2	3296.44	13	0.23 m³
Common Rafter	Rafter	50.00	150.00	CR3	3300.72	12	0.29 m³
Common Rafter	Rafter	50.00	150.00	CR4	253.60	11	0.80 m³
Common Rafter	Rafter	50.00	150.00	CR5	669.37	4	0.62 m³
Common Rafter	Rafter	50.00	150.00	CR6	2107.51	4	0.88 m³
Common Rafter	Rafter	50.00	150.00	CR7	3064.89	60	1.14 m³
Common Rafter	Rafter	50.00	150.00	CR8	3806.88	11	0.30 m³
Common Rafter	Rafter	50.00	150.00	CR9	3806.88	12	0.86 m³
Double Collar Beam							2.18 m³
Double Collar Beam 10							1.68 m³
Double Collar Beam 11							0.64 m³
Chord	Beam	100.00	100.00	CH	4733.13	1	0.00 m³
Chord	Beam	100.00	100.00	CH	6100.00	2	0.12 m³
Chord	Beam	100.00	100.00	CH	6100.00	1	0.88 m³
Chord	Beam	100.00	100.00	CH	6366.25	11	0.88 m³
Chord	Beam	100.00	100.00	CH	5940.00	2	0.14 m³
Chord	Beam	100.00	100.00	CH	3633.13	1	0.10 m³
Chord	Beam	100.00	100.00	CH	6100.00	2	0.20 m³
Chord	Beam	100.00	100.00	CH	14060.77	1	0.14 m³
Chord 11							0.87 m³
Hip Jack	Rafter	50.00	150.00	HJ1	204.75	2	0.00 m³
Hip Jack	Rafter	50.00	150.00	HJ2	205.88	2	0.00 m³
Hip Jack	Rafter	50.00	150.00	HJ3	115.83	1	0.00 m³

Flexible scheduling technology is introduced in Rafter+ software. It allows you to define quickly how to mark and sort different roof framing elements. The Sort function groups, sorts and numbers framing elements according predefined solutions. Main types of schedules as examples are included with software installation.

More information: [www.tools4revit.com](http://www.tools4revit.com)